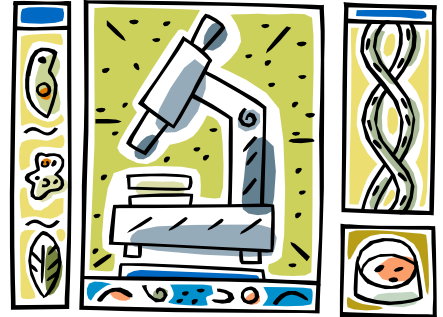


# Macrogen's **EZ-Seq label** User Guide

Thank you very much for choosing Macrogen's EZ-seq service.

With the labels that you receive with this letter, your DNA samples can be sequenced in the easiest way. Only a couple of small things should be arranged by you, and this letter gives you the information about it.



## 1. Sample preparation

In EZ-seq service you have to send the premixed DNA and primer sample to Macrogen. Please prepare your samples in the following way.



### - PCR products

1. Put **5ul of 50ng/ul** PCR product in **1.5ml tube**.
2. Add **5ul of 5pmole/ul primer (5mM)**

If your PCR product is larger than 1,000bp, you may need to use the sample with higher concentration.

### - Plasmid DNA

1. Put **5ul of 100ng/ul** plasmid DNA in **1.5ml tube**
2. Add **5ul of 5pmole/ul primer (5mM)**

If you are working with large-sized plasmids(>10kb), please use the samples with higher concentration up to 500ng/ul.

We recommend you to measure the concentration by gel-electrophoresis rather than using UV(or fluorescence)-based measurements. Approximate measurement in the gel image is good enough.

## 2. Label the sample



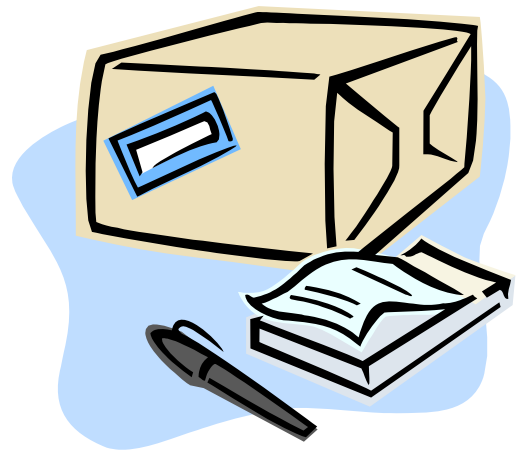
We have sent you the list of labels in excel file. This file is for your own record and you do not need to send this file back to us. In the excel file, there is the list of labels that you've received. Please put the original names of the samples in the corresponding label so that you can identify which samples were sequenced under which serial number.

On 1.5ml tube please attach the label. It is advised to attach the label around the tube wall. The 2D-barcode area should not be damaged, so please do not tear or fold the bar-coded area.

## 3. Ship the samples

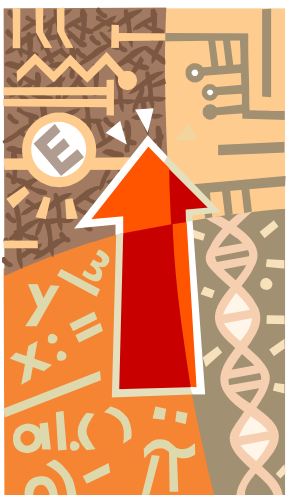
If you have more than 20 samples to be sequenced at a time, we will pay for the shipping cost, so please request us with free shipping account number by email. The samples should be shipped to the following address.

Macrogen Europe  
Meibergdreef 39  
1105AZ Amsterdam  
the Netherlands



Please note that the EZ-seq service is only available in Macrogen Europe, so please do not send the samples to Macrogen Korea. It will only make delay in results delivery!

## 4. Results!



The results shall be back to you by email within 24 hours from the point of sample receipt in Macrogen. All the sequencing will be done in the same process and chemistry with our regular sequencing orders, so you may expect the same high level of the sequence data.

However, as the template and primer are already mixed in the tube, we cannot optimize the reaction condition even if the sequence results are not good. From our experience, most of the sequence failure comes from insufficient amount of template DNA, or usage of wrong sequencing primers. This means that by using adequate concentration of template DNA along with proper primer will make good sequence results in most cases. So it is very important to put correct amount of DNA samples in the tube to get the sequence good results at a single trial.