



## ITS rDNA and 26S rDNA region Sequencing Analysis

This service provides the sequence of ITS region and 26S(D1/D2 region). And using the sequence, we search sequence databases (NCBI) and calculate the statistical similarity of matches between rRNA databases (NCBI) and target fungus.

### Information

#### Sample Preparation

- Fungi & Yeast
- : Cell stock, Agar plate

#### Procedures

- Extract gDNA from Fungi & Yeast cells
- Amplify of ITS region and 26S(D1/D2 region) using PCR primers
- Sequencing
- Assemble

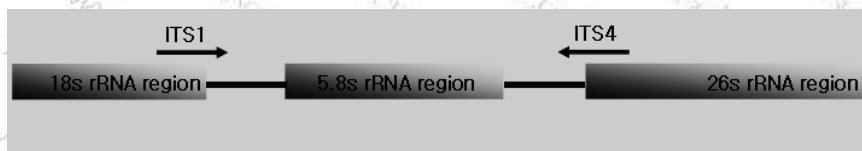
#### - 18S rRNA(ITS region) -

##### Primer Information

Primer Name Primer Sequences

ITS 1 5' (TCC GTA GGT GAA CCT GCG G) 3'

ITS 4 5' (TCC TCC GCT TAT TGA TAT GC) 3'



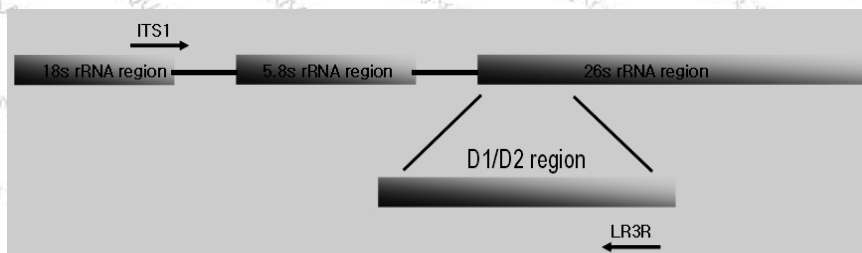
➔ ITS1 region + 5.8s region + ITS2 region (600~700bp)

#### - ITS + 26S(D1/D2 region) -

##### Primer Information

ITS 1 5' (TCC GTA GGT GAA CCT GCG G) 3'

LR 3R 5' (GGT CCG TGT TTC AAG AC) 3'



➔ ITS1 region + 5.8s region + ITS2 region + D1/D2 region (1,100~1,200bp)