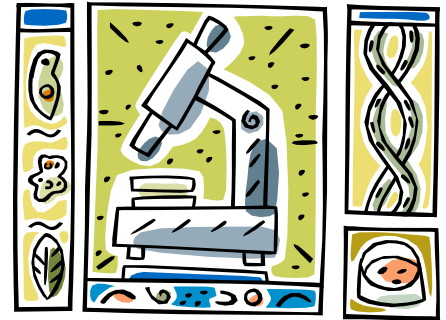


Macrogen's Label User Guide

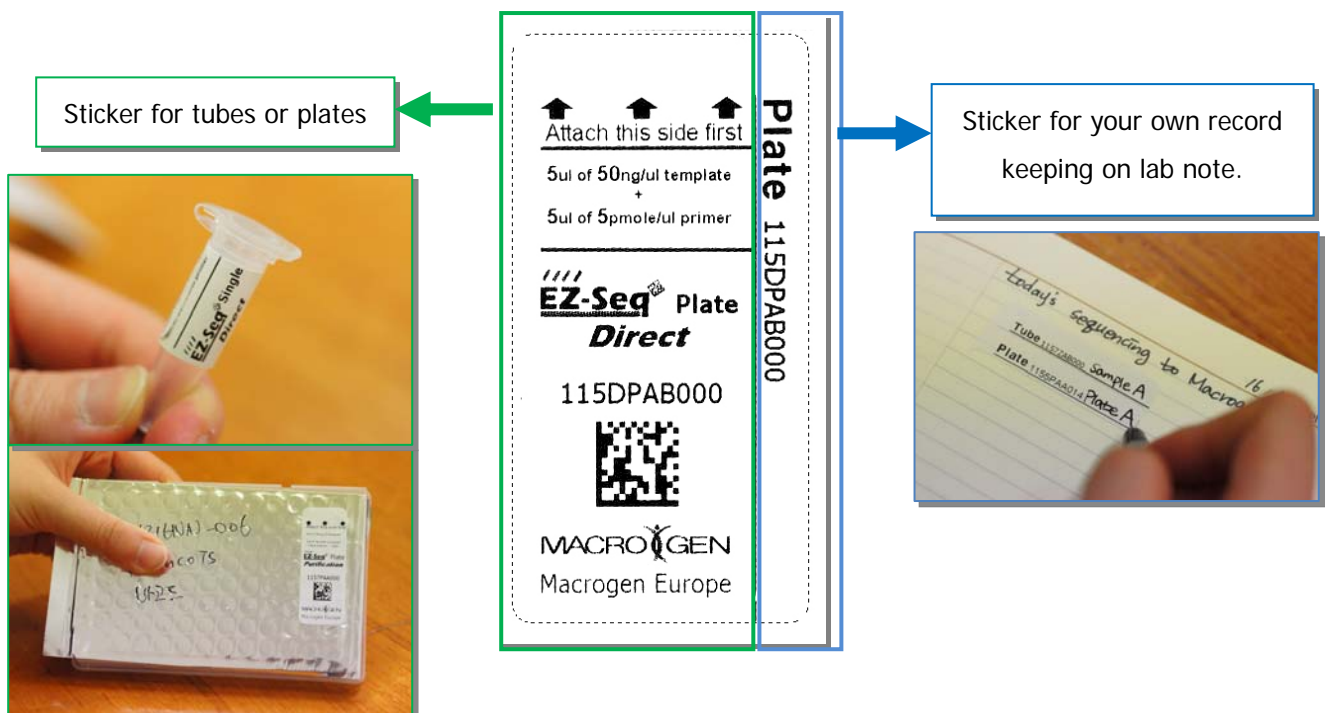
Thank you very much for choosing Macrogen's EZ-seq service.

With the labels that you receive with this letter, your DNA samples can be sequenced in the easiest way possible. Only a couple of small things should be arranged by you, and this document gives you the information about it. If you are using EZ-seq service for the first time, it is our recommendation to read carefully this document.



1. The Label

You will see that one EZ-seq label is made up of two parts. One is for your own record keeping, and the other is for attaching on the tubes or plates.



When attaching on tube, please start from the arrow side and roll it around so that the label can overlap itself. For plate label, please attach anywhere on top of the lid. In any case, it is important to make the 2D bar-code visible, not hindered by anything.

Labels are provided as a long strip of many labels. Among them the very first label consists of your name, invoice number and the email address to which the results will be directed. This particular label is **not for sample labeling but for your own record keeping.**

2. Sample preparation

There are four different EZ-seq services depending on sample container (Single or Plate), and PCR purification options (Direct or Purification). You can find this information in each label.

In EZ-seq service you have to send the pre-mixed DNA and primer sample to Macrogen. Please prepare your samples in the following way.

- 1) **Template DNA of 5ul** with either of following concentrations.
 - A. 50 ng/ul of PCR product
 - B. 100 ng/ul of plasmid DNA
- 2) **Add 5ul of primer** with either of following concentrations.
 - A. **5 pmole/ul** for **EZ-seq Direct service** (without purification)
 - B. **10 pmole/ul** for **EZ-seq Purification** service (for PCR products)



If you are working with large-sized plasmids(>10kb), please use the samples with higher concentration up to 500ng/ul.

We recommend you to measure the concentration by gel-electrophoresis rather than using UV(or fluorescence)-based measurements. Approximate measurement in the gel image is good enough.

3. Ship the samples

If you have more than 20 samples to be sequenced at a time, we will pay for the shipping cost, so please request us with free shipping account number by email. The samples should be shipped to the following address.

Macrogen Europe
Meibergdreef 39
1105AZ Amsterdam
the Netherlands



For your convenience, shipping label for envelope is also sent to you.

Please feel free to contact us by info@macrogen-europe.com.